

The RollCall Control Panel is a PC application enabling remote configuration and control functionality for all RollCall enabled Infrastructure. Navigating and controlling your infrastructure is made simple using standard 'Windows Explorer' type operations that any user of Windows is familiar with. Whether you have a small control network or multiple geographically separate and potentially unmanned sites, RollCall Control Panel enables access to your entire infrastructure, anywhere, anytime. Included with RollCall control Panel are key features that ease systems installation and maintenance, such as the ability to access User Manuals for the entire IQ Modular product range at the touch of a button within RollCall. It is also possible to backup individual module configurations and apply software upgrades.

## Order information

RollCall Control Panel download available from:  
<http://www.snellgroup.com/support/downloads-rollcall-lite-v4.0>

## Licence information

*There is no restriction on the number of copies installed per system of the RollCall Control Panel Application.*

Company policy is one of continuous product improvement. Specifications are therefore provisional and subject to change without notice. All other trademarks mentioned herein are duly acknowledged.

**snellgroup.com**

# RollCall Control Panel

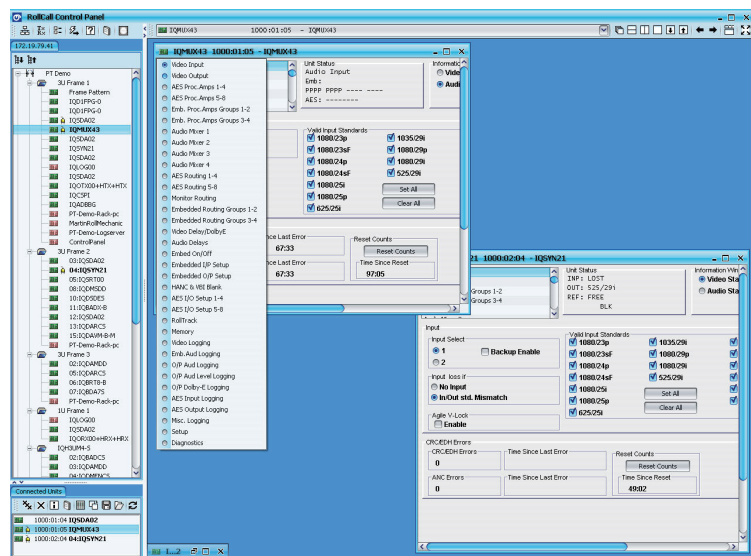
## Windows PC Based Configuration and Control

### Does this module suit your application?

- Full remote control of RollCall compatible units from single or multiple PC workstations
- Access hardware configuration and control functions via simple GUI
- Fingertip access for all IQ modular product manuals within RollCall
- Multiple units can be controlled simultaneously for efficiency
- Save and restore configurations to entire RollCall systems from a single location
- Operates through Ethernet/TCP/IP network, RollNet Interface cards (RollPCI or RollUSB) or through an RS422 serial port
- Supports Microsoft Windows Vista, XP and Windows 2000

### Why should you choose this product?

- Build and integrate your systems with greater efficiency by configuring and controlling from one PC workstation
- Ideal in central operations or engineering location to enable real time control of all RollCall connected systems
- Offers full remote control of all RollCall enabled products from a graphical environment
- Secure access by password or IP address guest lists



The RollCall Control Panel Package includes 'RollCall IP Proxy' - TCP/IP connection manager to enable concurrent connection to multiple IP enabled RollCall products. Connection to equipment can be achieved by Ethernet/TCP/IP, RollNet or RS422. Control of Non-Ethernet enabled RollCall products will require either IQCRSAD RS232 to 422 converter, or RollPCI / RollUSB to connect to the RollNet Network.

RollCall Control Panel is available free of charge to all users of Snell infrastructure products. It can be ordered on CD and it is also available for download from the Internet.